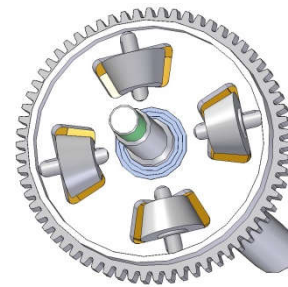
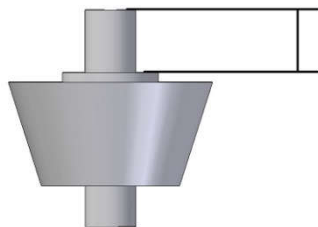




# FENIX DELTA GEAR DIFF



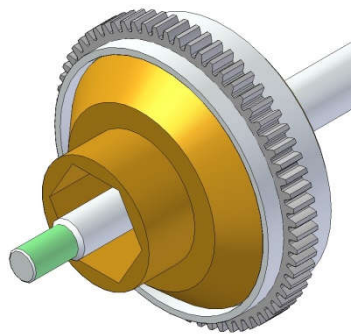
Do not force the pinion in the housing. If necessary shave a little from the upper part,



Install the 4 pinions.  
Install the 3/8 bearing into the spur  
Start with a 500.000 – 1.000.000  
grease, better results are achieved by  
using a grease with a good thermal  
stability



Install the  
bearings,  
springs,  
pressure  
plate and  
nut as  
shown



Close the diff with side diff and turn it several times by hand, smearing the grease on the teeth

## NOTE:

Do NOT use the nut to make the diff "hard". The nut must be used only to mate properly the gears.

"hard/soft" setting as to be achieved using different greases.

## Settings:

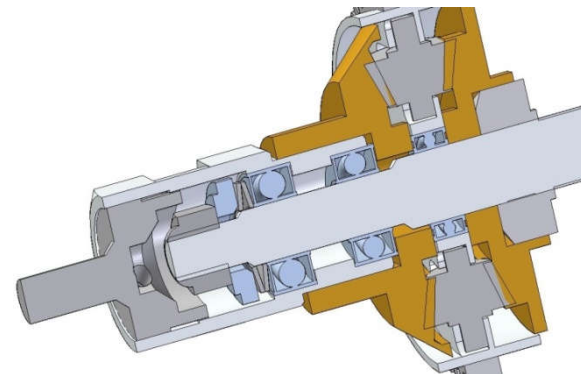
"Hardness" of the differential is achieved by both, grease hardness and spring tension. Take your time setting the spring tension. You shouldn't get any mechanical "lock". Best results are achieved after run-in the diff for a couple of batteries, at moderate speed

Do not put too much grease... Just a little film over the gear rings. The diff will self bleed any unnecessary grease..

After the first run-in you might want to increase the CTS of the grease.

Don't forget that the diff will be "solid" under acceleration so you might have to setup your model car accordingly. The diff will improve also braking of the model car.

**Note:** Due the fact the Diff will fit different cars, might be necessary to shorten a bit the rear shaft, according your personal requirement.



Close the  
differential as  
show.